

NATURAL SCIENCES & TECHNOLOGY

RESOURCE PACK
GRADE 5 TERM 1



RESOURCE 1

[https://commons.wikimedia.org/wiki/File%3AFish_hunter_\(6811393500\).jpg](https://commons.wikimedia.org/wiki/File%3AFish_hunter_(6811393500).jpg)

AN EGRET CATCHING A FISH



RESOURCE 2

<https://commons.wikimedia.org/w/index.php?curid=127140>

https://commons.wikimedia.org/wiki/File%3ASouth_Vietnam's_Water_Lily.JPG

DIFFERENT TYPES OF LEAVES



Aloe leaves: thick and fleshy to store water - Dry habitat



Water lily leaves: flat and wide to float on water - Water habitat

RESOURCE 3

<https://commons.wikimedia.org/wiki/File%3ASouthern-Double-collared-Sunbird-Protea.jpg>

https://commons.wikimedia.org/wiki/File%3AElephant_side-view_Kruger.jpg

DIFFERENT HABITATS



A sunbird on a protea. Its beak can suck the nectar from plants.



The African elephant uses its tusks and trunk to defend itself. It uses its trunk to reach high into trees for food. The tusks dig up roots for food.

RESOURCE 4

[https://commons.wikimedia.org/wiki/File%3AClivia_miniata_\(BG_Zurich\)-06.JPG](https://commons.wikimedia.org/wiki/File%3AClivia_miniata_(BG_Zurich)-06.JPG)

https://commons.wikimedia.org/wiki/File%3A2010-09-25_14-16-04_Namibia_Hardap_Hammerstein.jpg

DIFFERENT HABITATS CONTINUED



Clivias grow in forests. They like dark areas.



Ostriches live in hot areas.

RESOURCE 5

Shutterstock

LIONESS AND CUBS IN THE SHADE OF A TREE



RESOURCE 6

https://commons.wikimedia.org/wiki/File%3ABuphagus_africanus%2C_Serengeti%2C_Tanzania_1.jpg

INTER-DEPENDENCE: OXPECKERS ON A GIRAFFE



RESOURCE 7

<https://pixnio.com/free-images/2017/05/31/2017-05-31-22-23-32.jpg>

BEES POLLINATING A PLANT

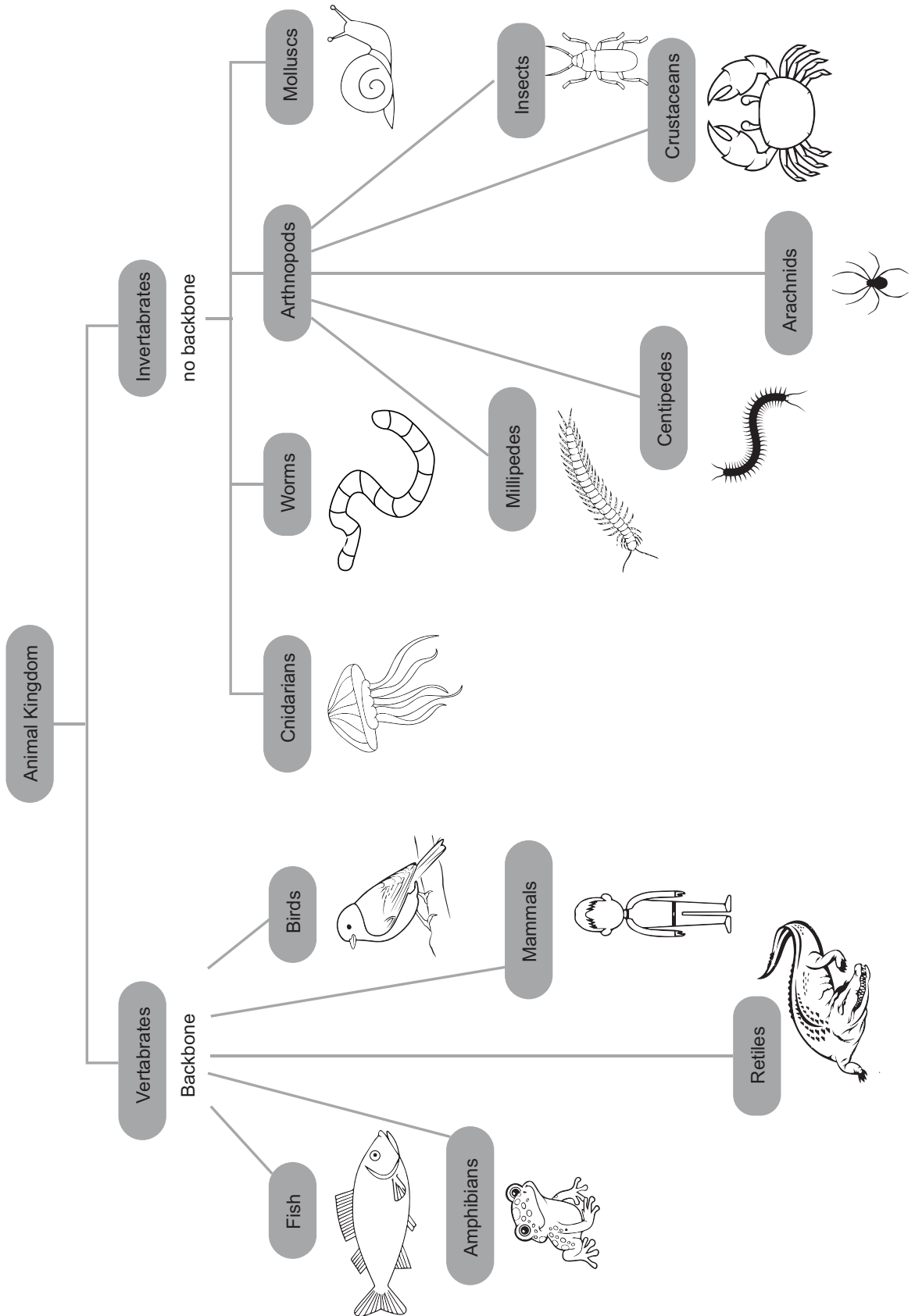


RESOURCE 8

https://commons.wikimedia.org/wiki/File%3ACrocodiles_du_Nil_2.jpg

CROCODILES





RESOURCE 10

https://commons.wikimedia.org/wiki/File%3AFresh_Crab.jpg

<https://static.pexels.com/photos/209074/pexels-photo-209074.jpeg>

INVERTEBRATES: A CRAB AND A SNAIL



A crab has an exoskeleton. It has eight legs and two claws.



A snail has a shell.

RESOURCE 11

https://commons.wikimedia.org/wiki/File:Earthworm_06.jpg

https://commons.wikimedia.org/wiki/File%3AGreek_Butterfly_on_Flower.JPG

INVERTEBRATES: AN EARTHWORM AND A BUTTERFLY



An earthworm with a hydroskeleton.



A butterfly is an insect and has six legs

RESOURCE 12

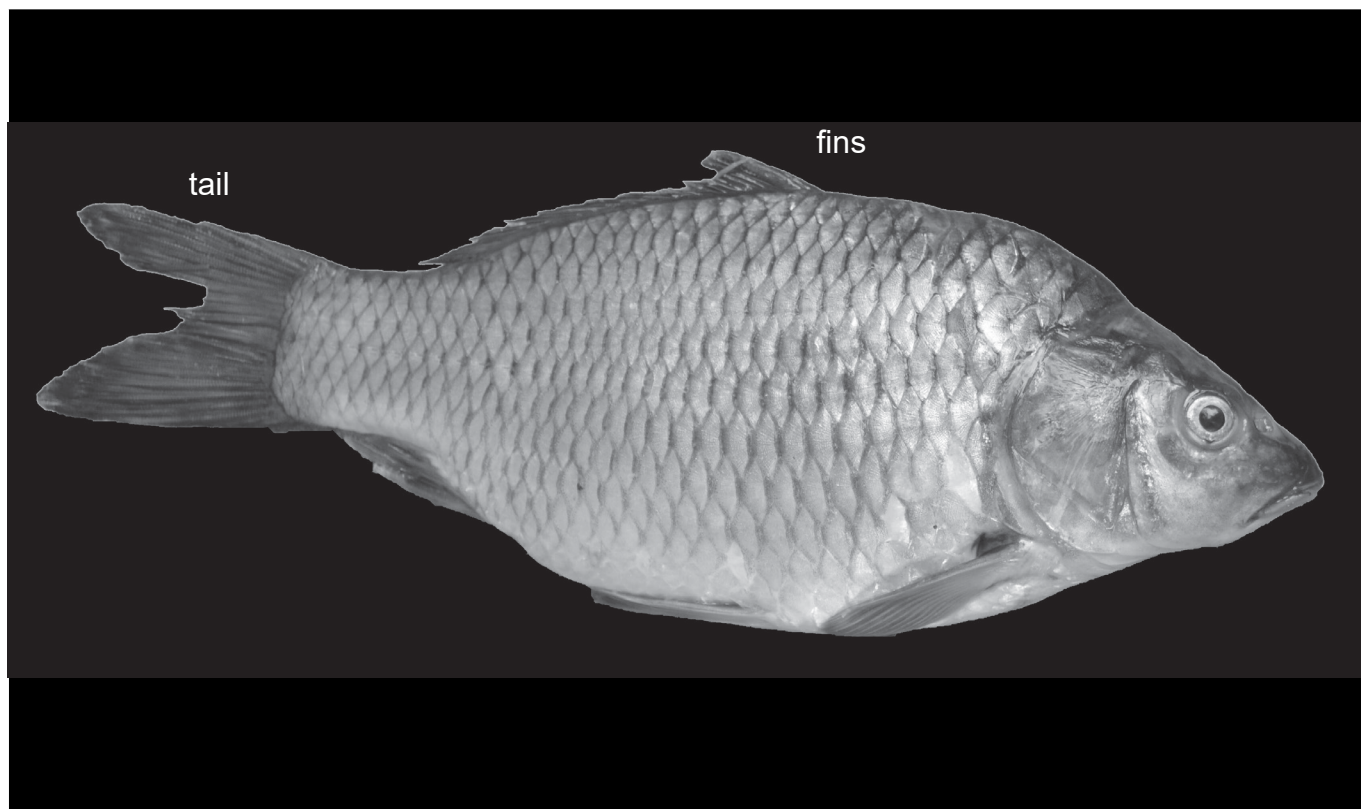
https://commons.wikimedia.org/wiki/File%3ANguni_cattle.jpg

[https://commons.wikimedia.org/wiki/File%3AFish_-_Puntius_sarana_from_Kerala_\(India\).png](https://commons.wikimedia.org/wiki/File%3AFish_-_Puntius_sarana_from_Kerala_(India).png)

VERTEBRATES: NGUNI COWS AND A FISH



Nguni cows



A fish: notice the scales and the fins and tail.

RESOURCE 13

https://commons.wikimedia.org/wiki/File:Earthworm_06.jpg

https://commons.wikimedia.org/wiki/File%3AGreek_Butterfly_on_Flower.JPG

INVERTEBRATES: AN EARTHWORM AND A BUTTERFLY



South Africa's National bird – the Blue Crane



Mfezi – a Mozambique spitting cobra

RESOURCE 14

https://commons.wikimedia.org/wiki/File%3ACeratotherium_simum_white_Rhinoceros_blanc_female_MNHN.jpg

A SKULL



RESOURCE 15

https://commons.wikimedia.org/wiki/File%3AAlligator_Cr%C3%A2ne_et_Mandibule.jpg

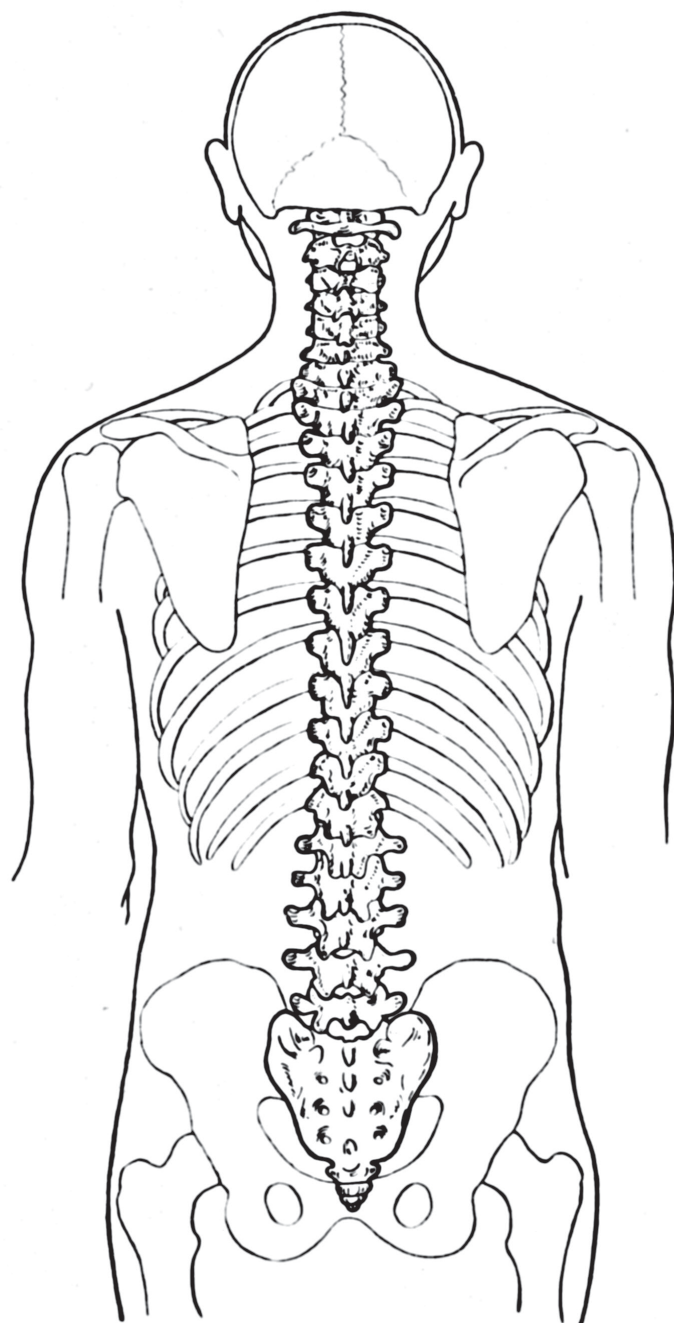
A SKULL



RESOURCE 16

[https://commons.wikimedia.org/wiki/File%3ABackbone_\(PSF\).png](https://commons.wikimedia.org/wiki/File%3ABackbone_(PSF).png)

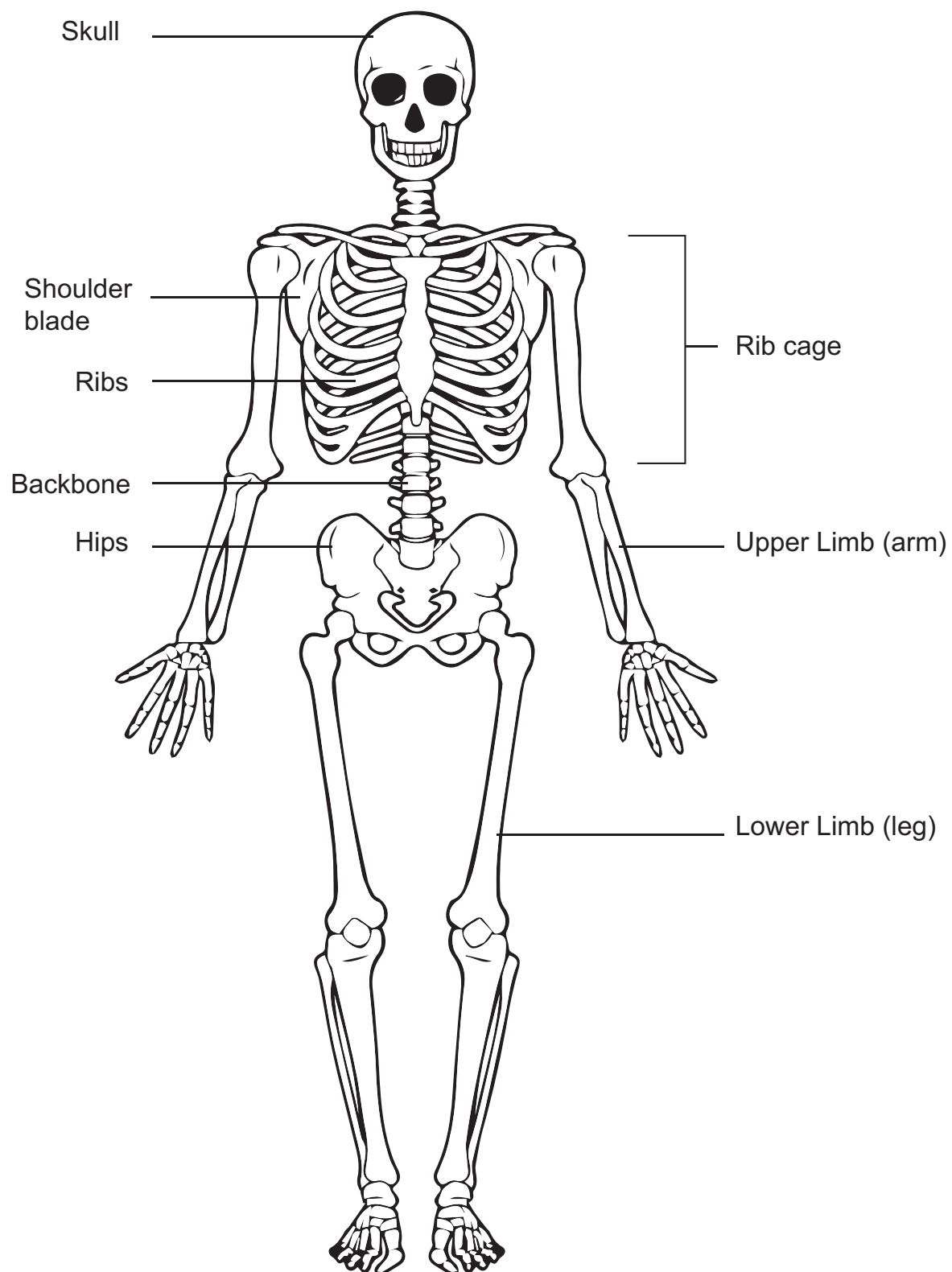
A BACKBONE



REAR VIEW



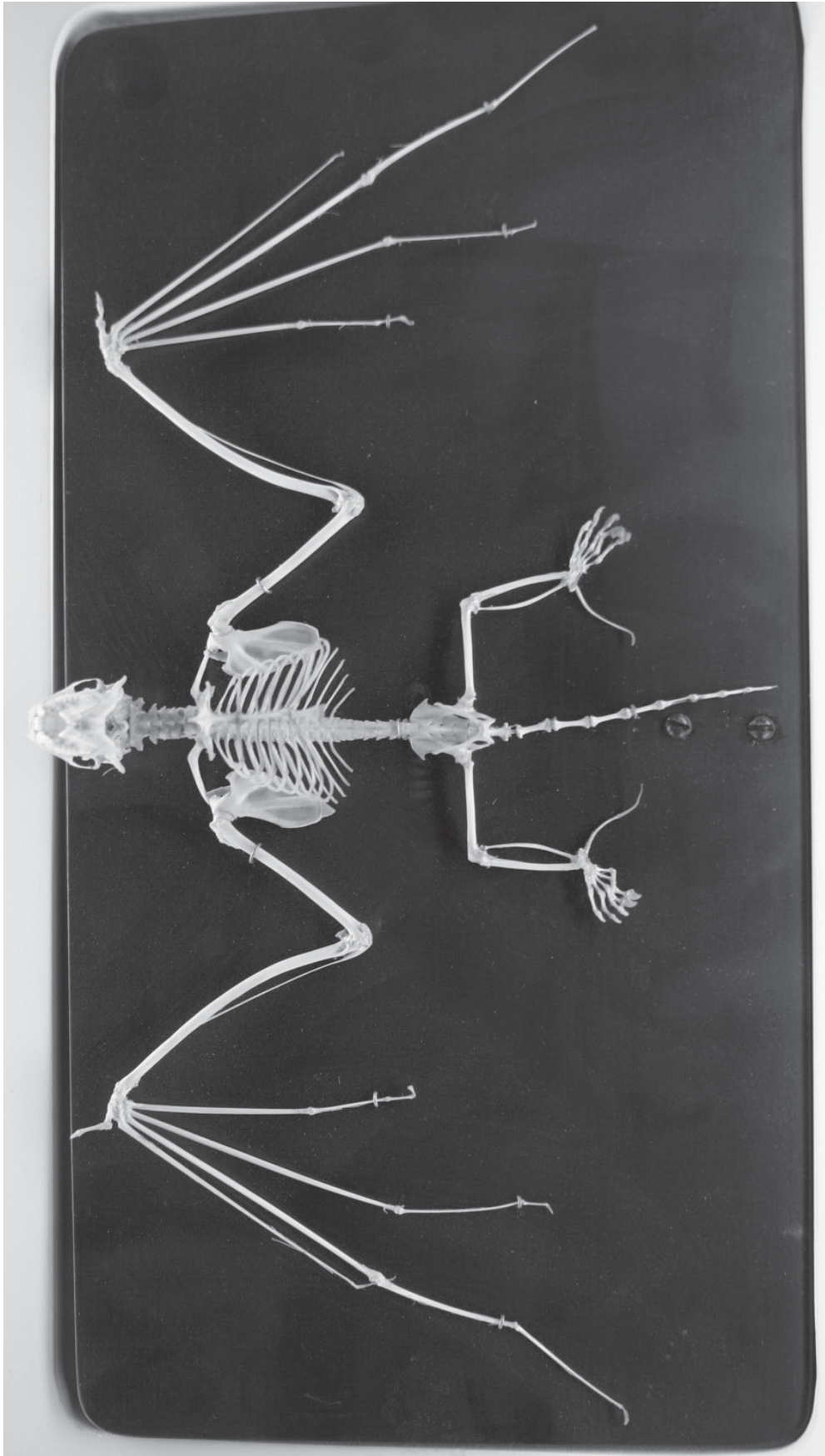
SIDE VIEW



RESOURCE 19

https://commons.wikimedia.org/wiki/File%3ABat-belly_side.jpg

A SKELETON OF A BAT



RESOURCE 19

https://en.wikipedia.org/wiki/Cat_anatomy#/media/File:Cat_skeleton.jpg

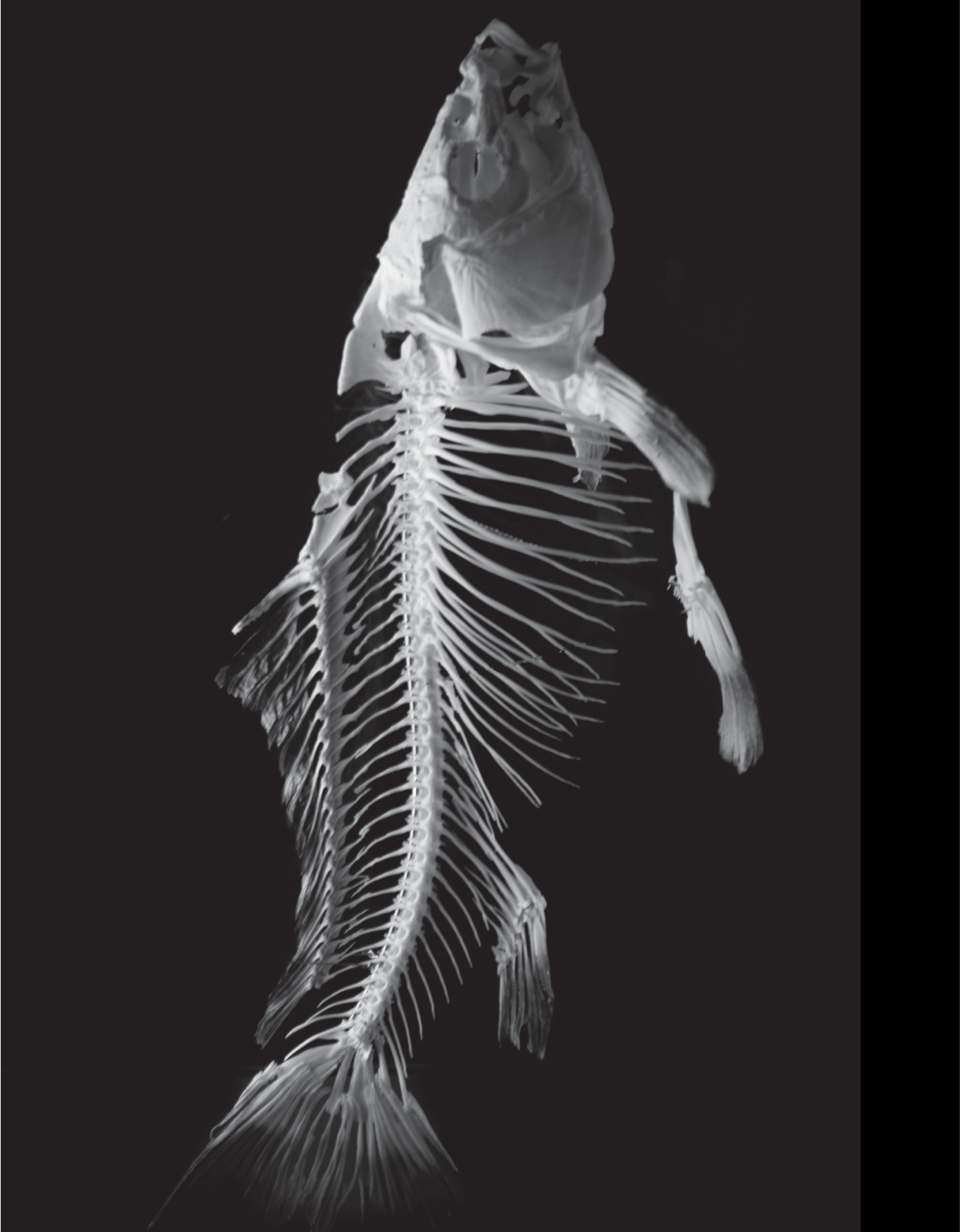
A SKELETON OF A CAT



RESOURCE 20

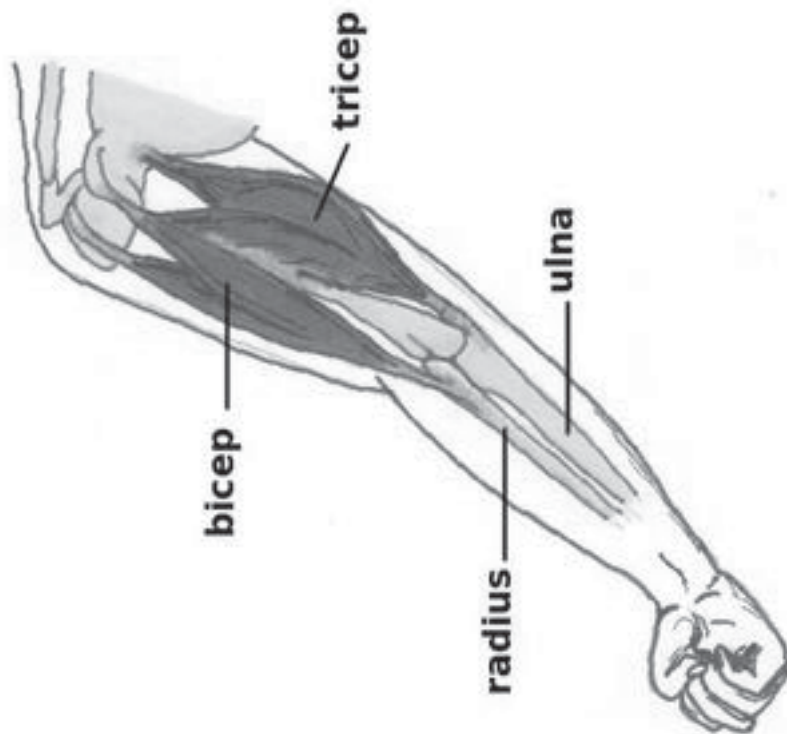
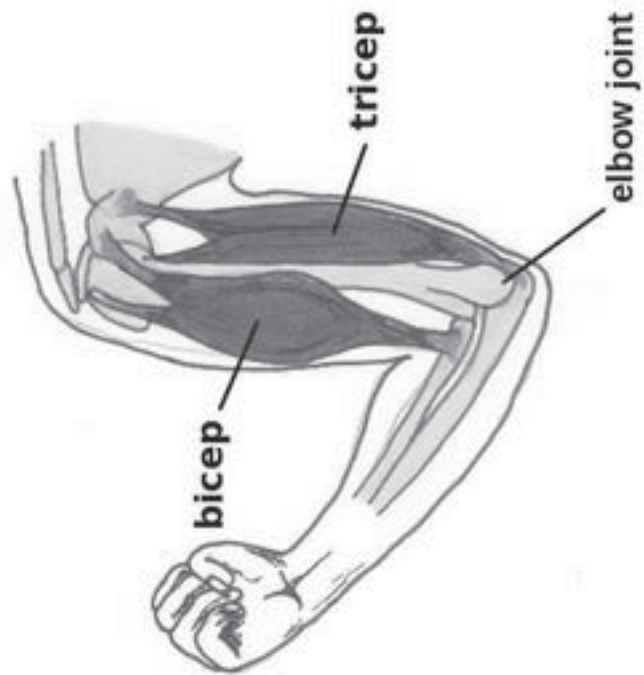
<https://www.pexels.com/photo/skeleton-fish-museum-fish-bones-9365/>

A FISH SKELETON



RESOURCE 21

BICEP AND TRICEP MUSCLES



RESOURCE 22

https://commons.wikimedia.org/wiki/File%3AThe_ladder_of_life_is_full_of_splinters.jpg
https://commons.wikimedia.org/wiki/File%3ASpider_web_with_dew.JPG

FRAME STRUCTURES



A ladder



A spider's web

RESOURCE 23

https://commons.wikimedia.org/wiki/File%3ABelber_Suitcase.jpg

SHELL STRUCTURES



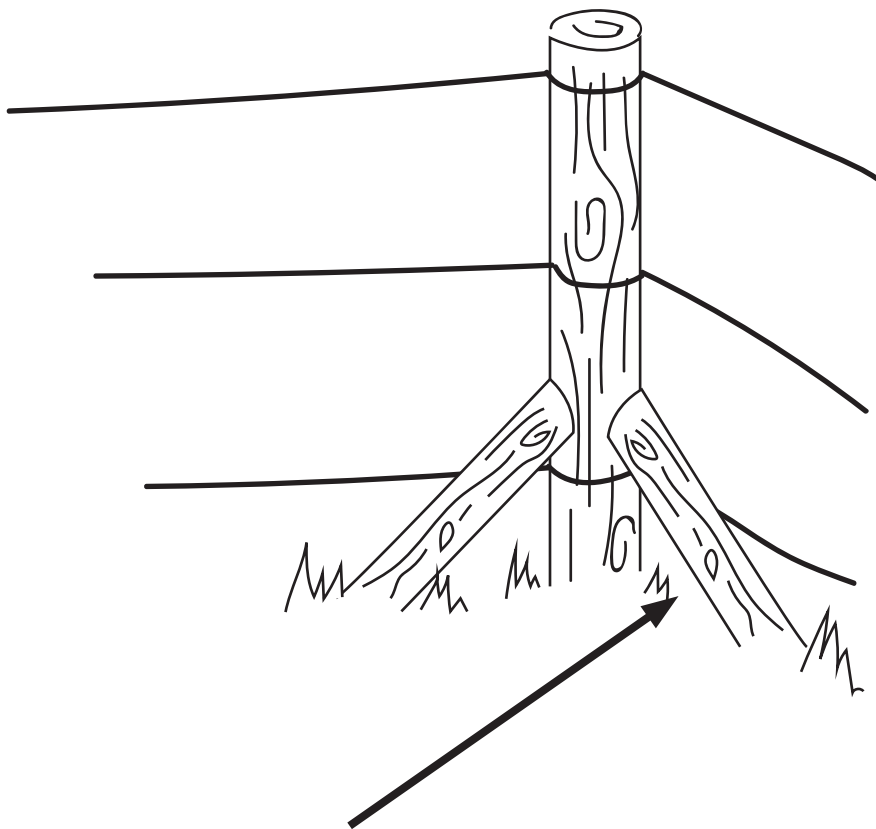
A suitcase



A racing helmet

RESOURCE 24

A STRUT

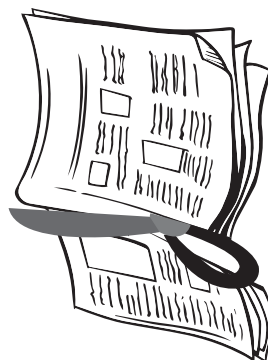
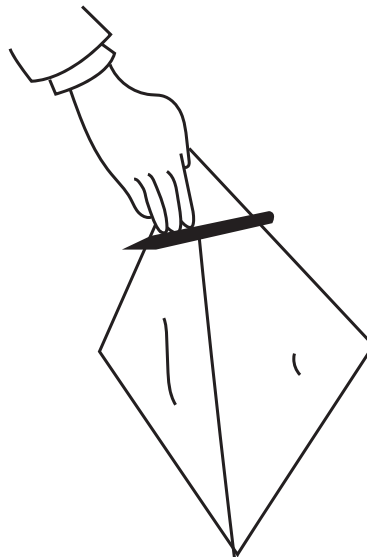
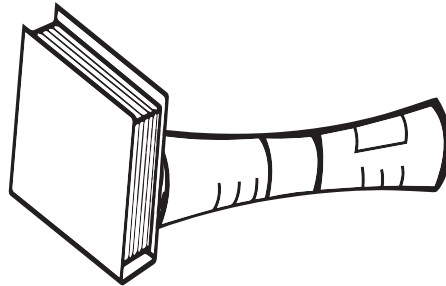


RESOURCE 25

MAKING NEWSPAPER TUBES FOR STRUTS

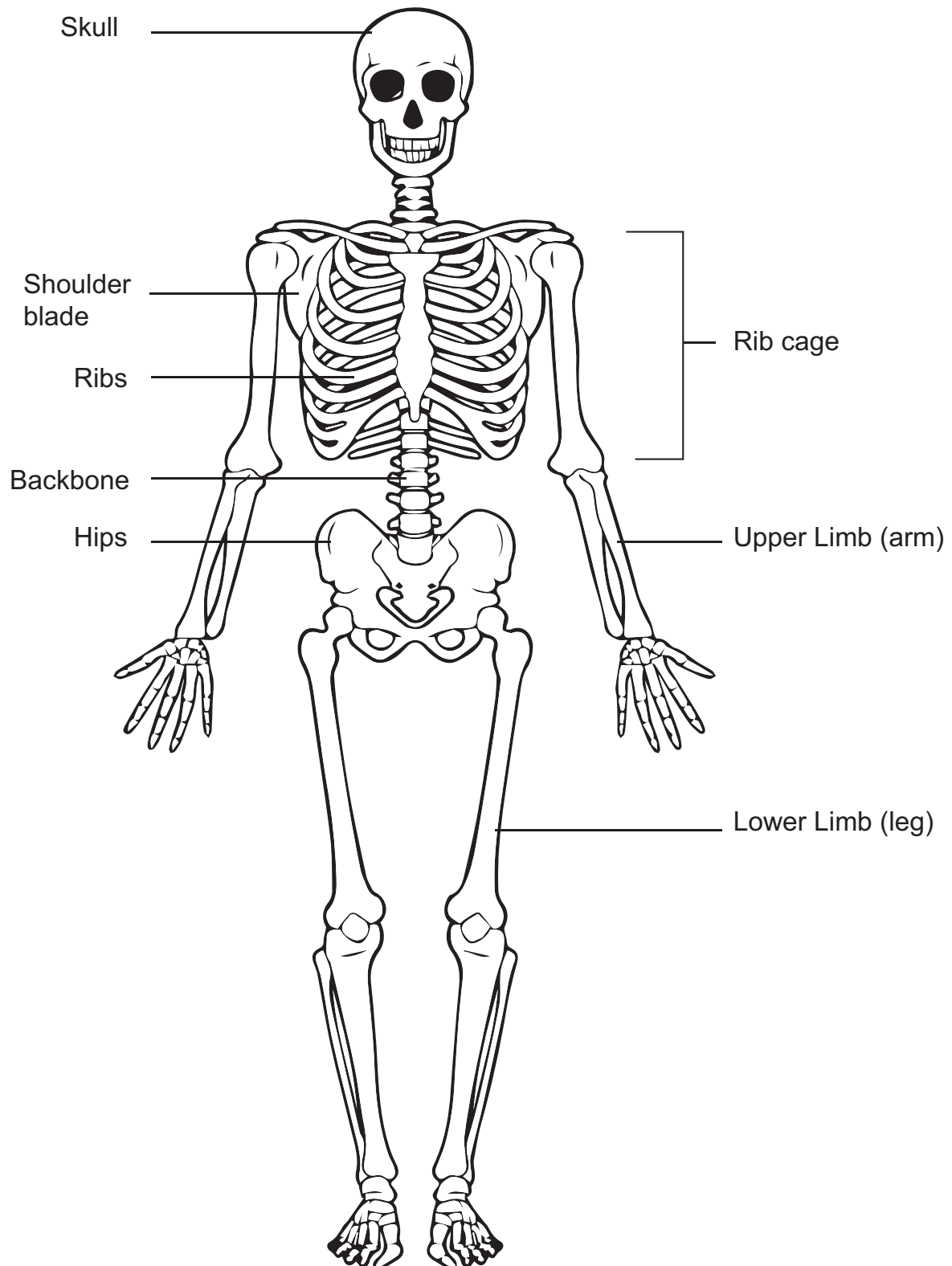
Do as illustration

(first drawing should be of a newspaper being folded from corner to opposite side to make a square, then cutting off the extra bit)



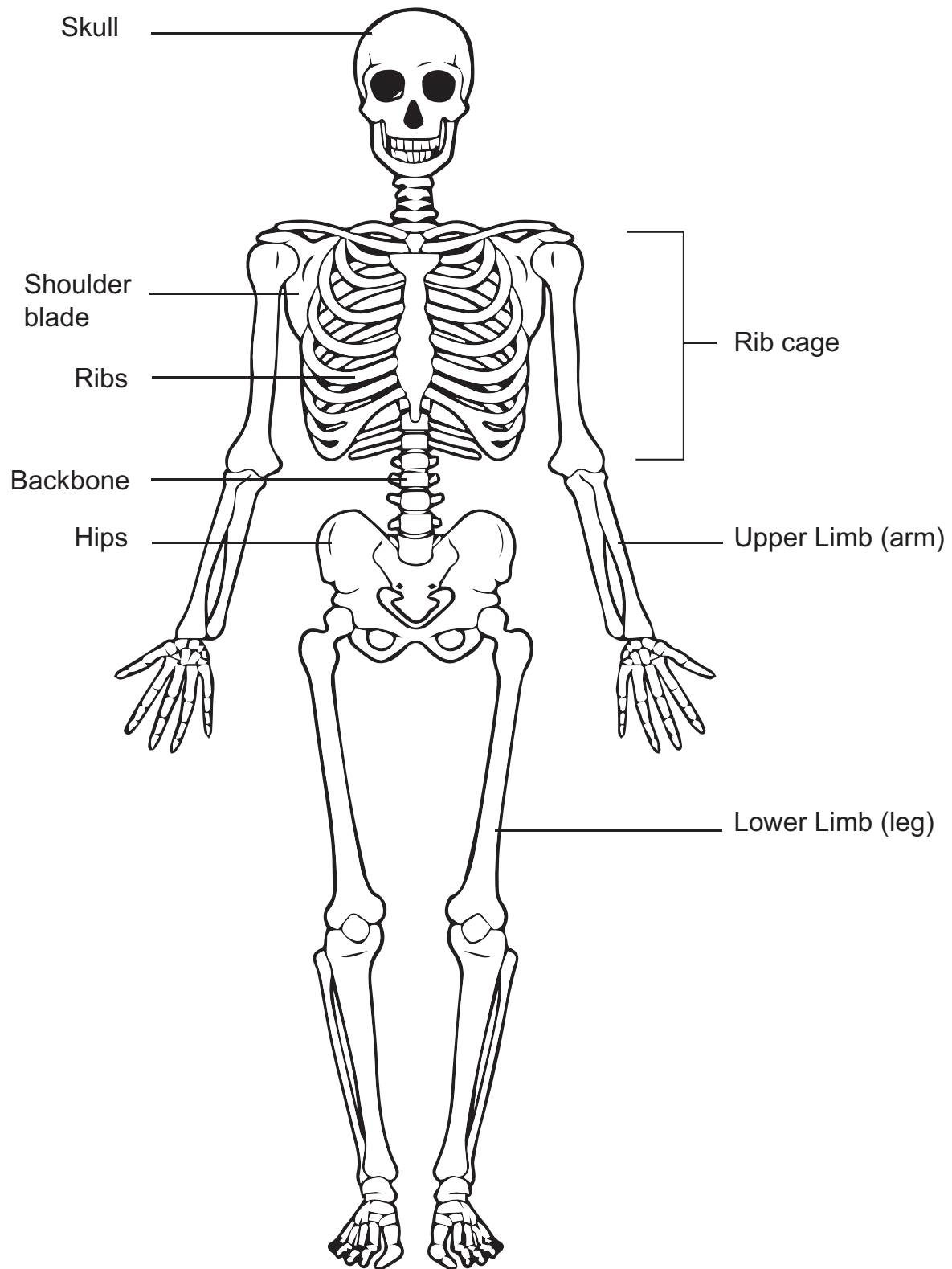
RESOURCE 26

A SKELETON



RESOURCE 27

A SKELETON



RESOURCE 28

Shutterstock

CARNIVORES: A LEOPARD EATING MEAT



RESOURCE 29

Shutterstock

HERBIVORES: A GIRAFFE EATING LEAVES



RESOURCE 30

Shutterstock

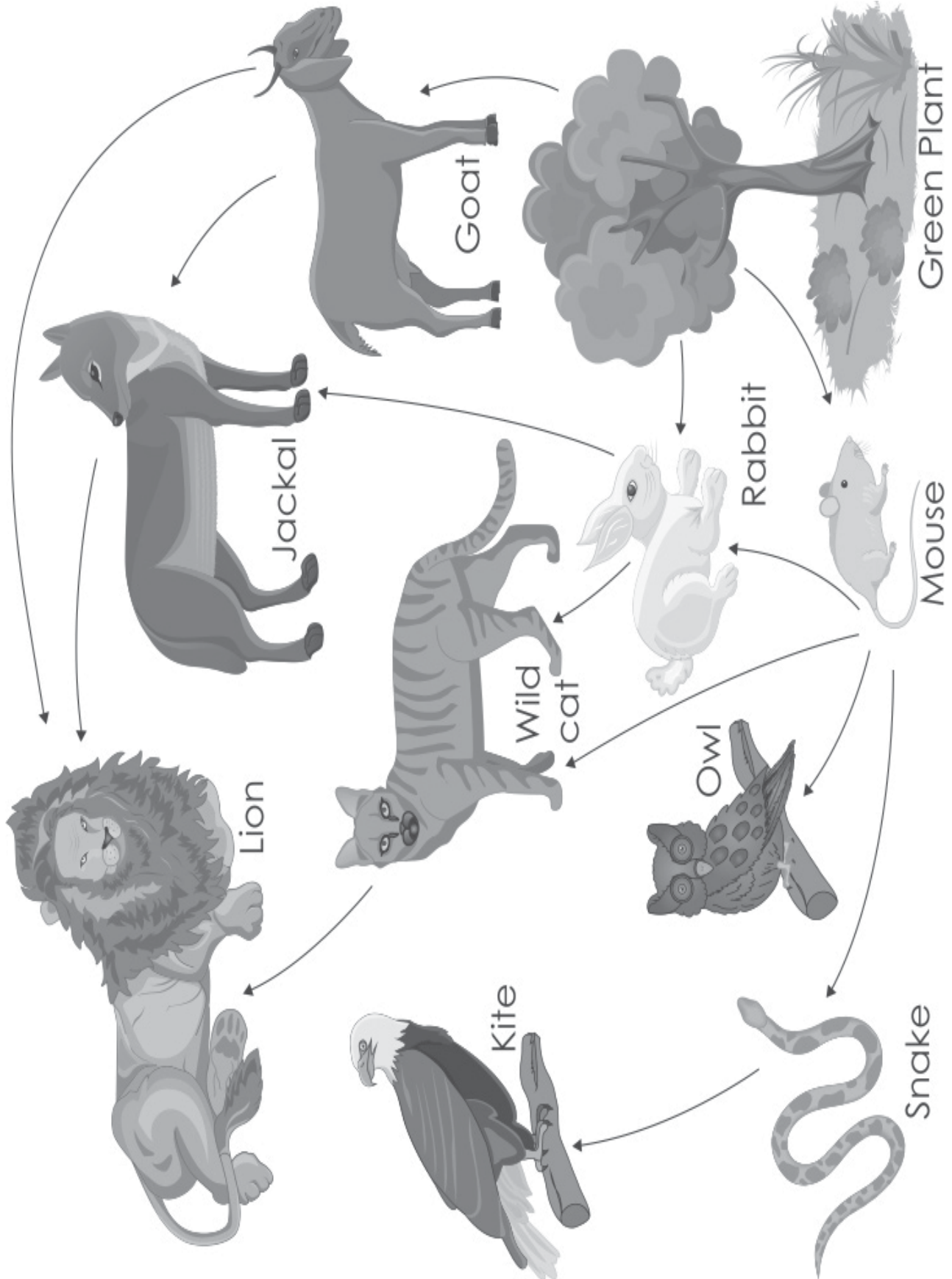
OMNIVORES: BABOONS EATING SEEDS AND MEAT



RESOURCE 31

Shutterstock

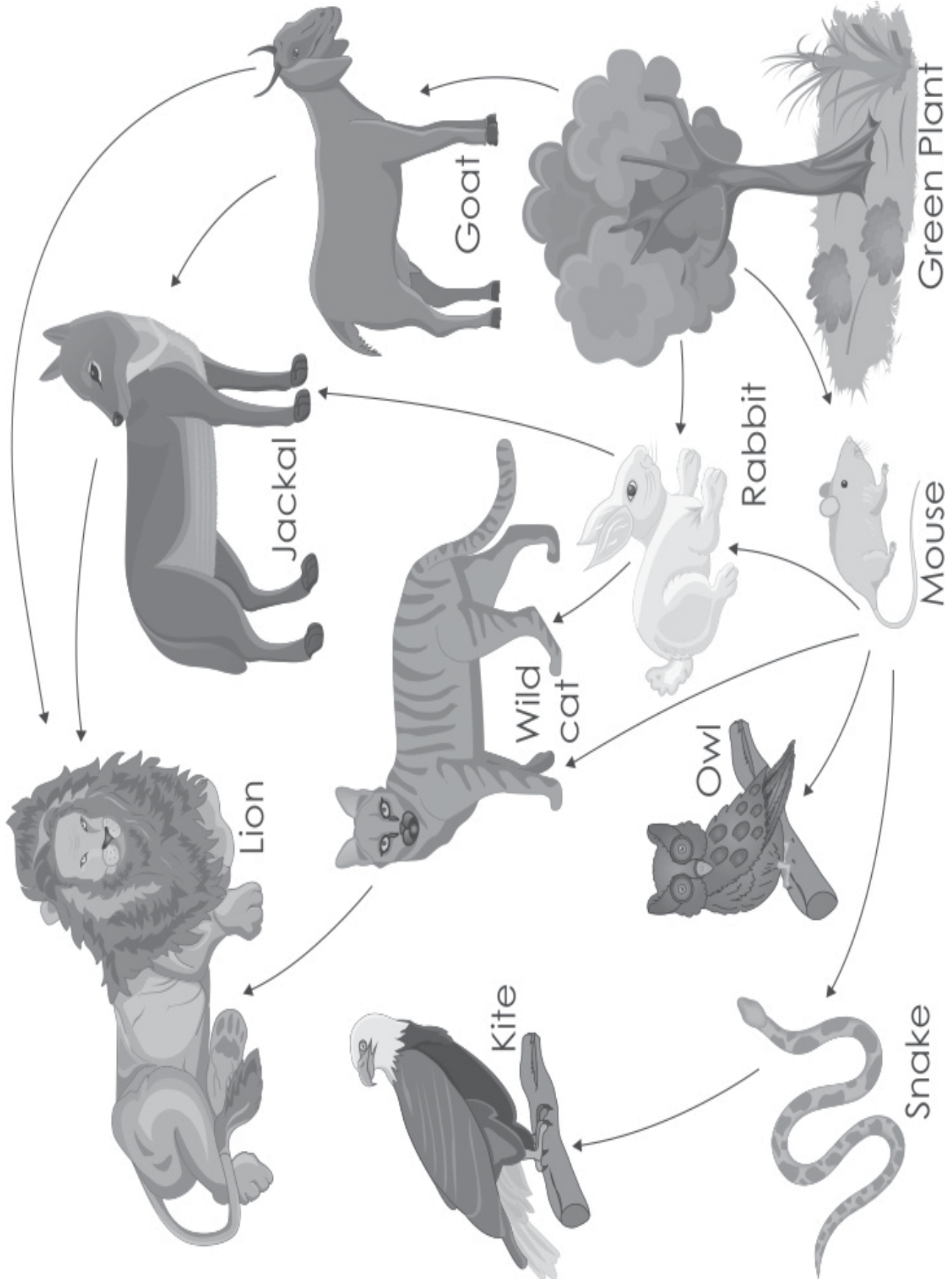
A FOOD WEB WITH MANY FOOD CHAINS



RESOURCE 32

Shutterstock

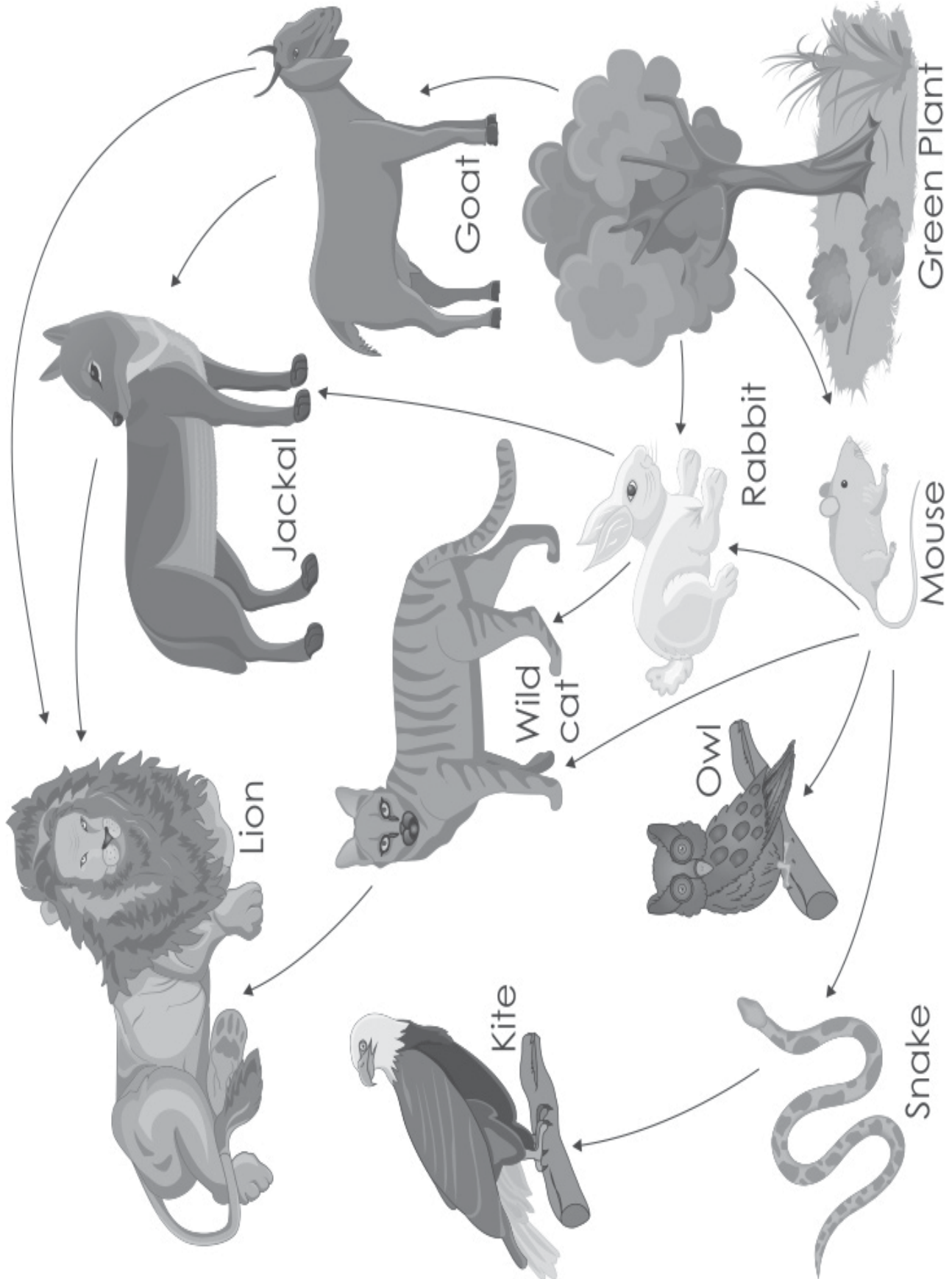
A FOOD WEB WITH MANY FOOD CHAINS



RESOURCE 33

Shutterstock

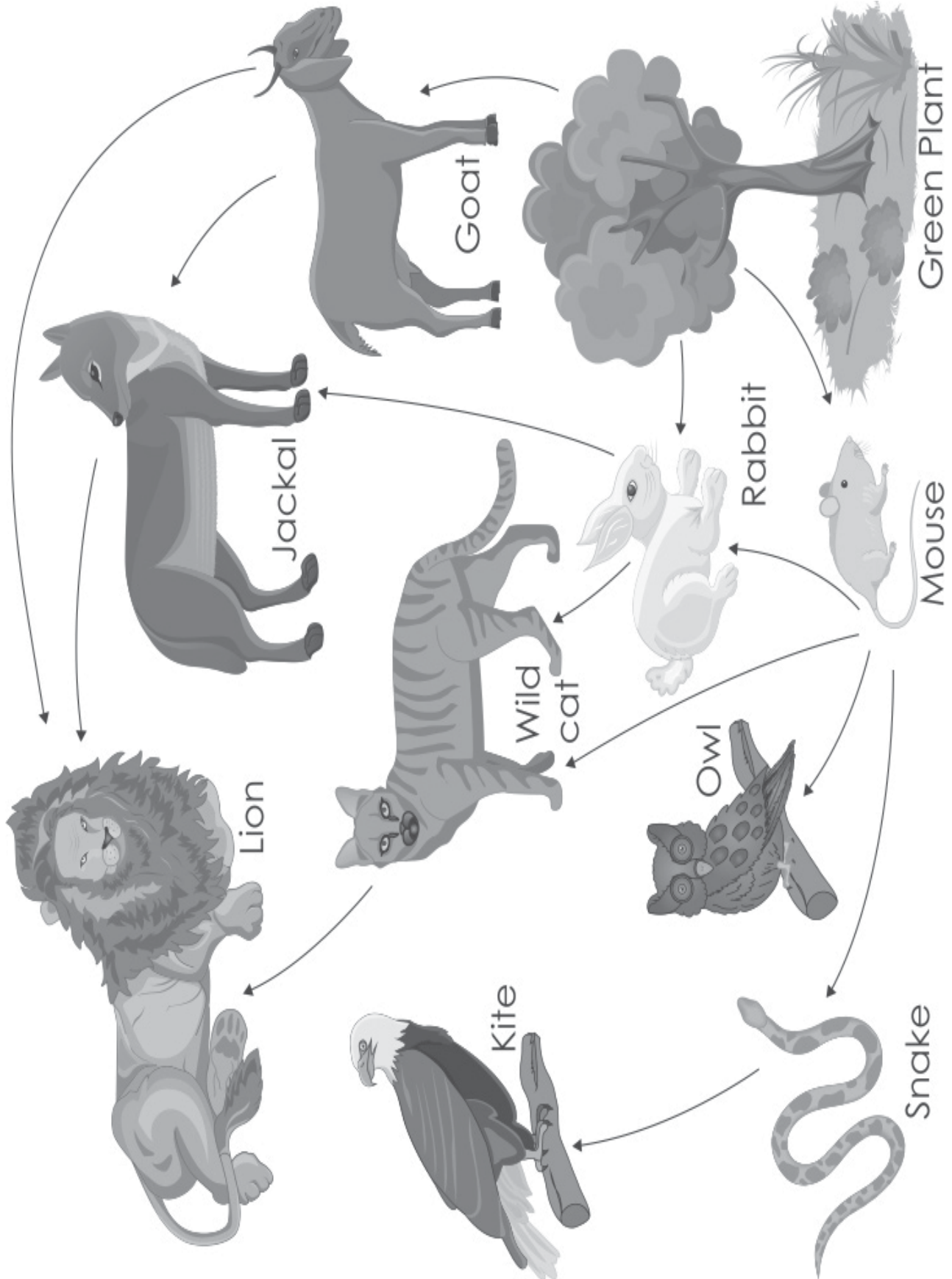
A FOOD WEB WITH MANY FOOD CHAINS



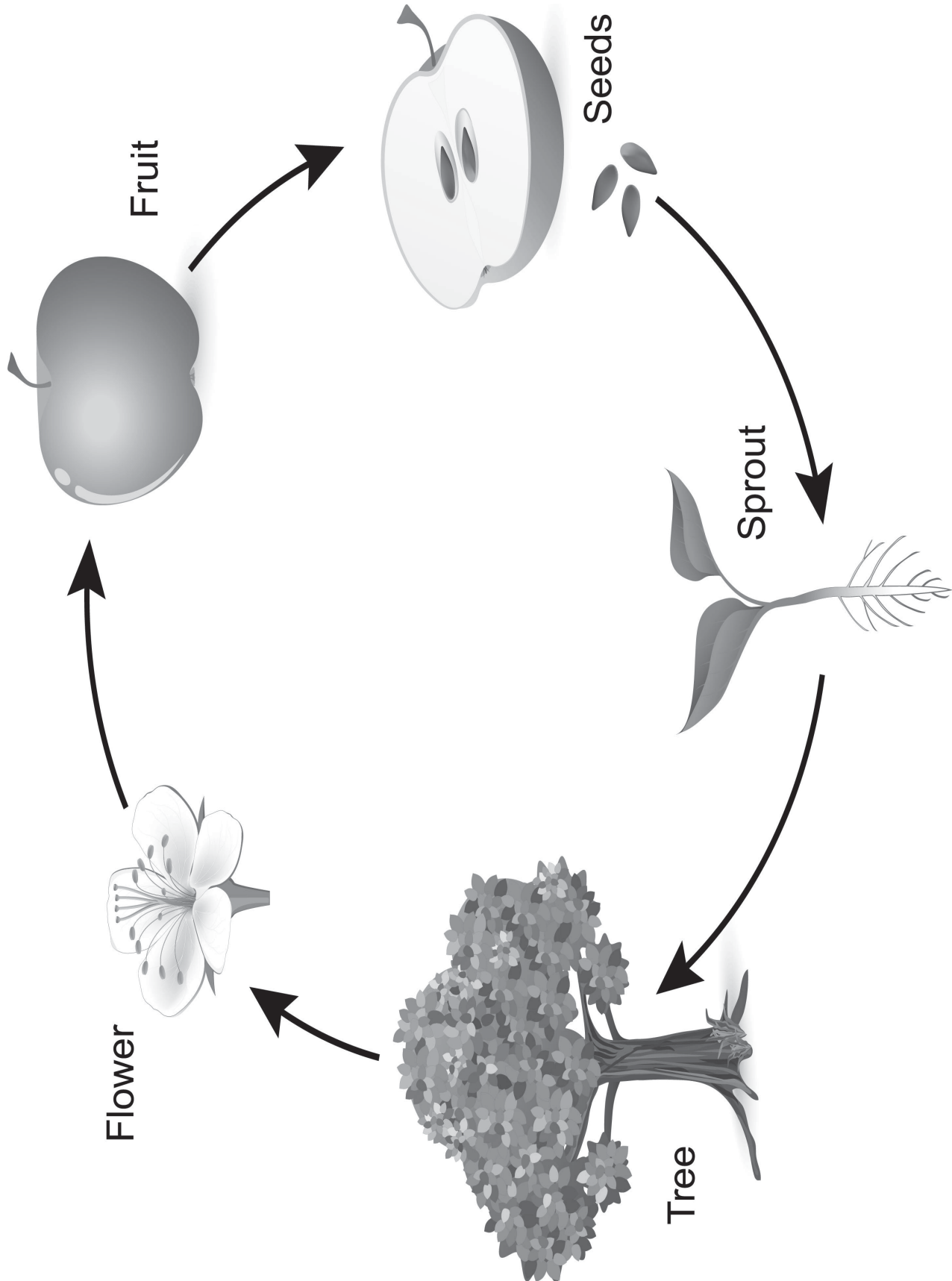
RESOURCE 34

Shutterstock

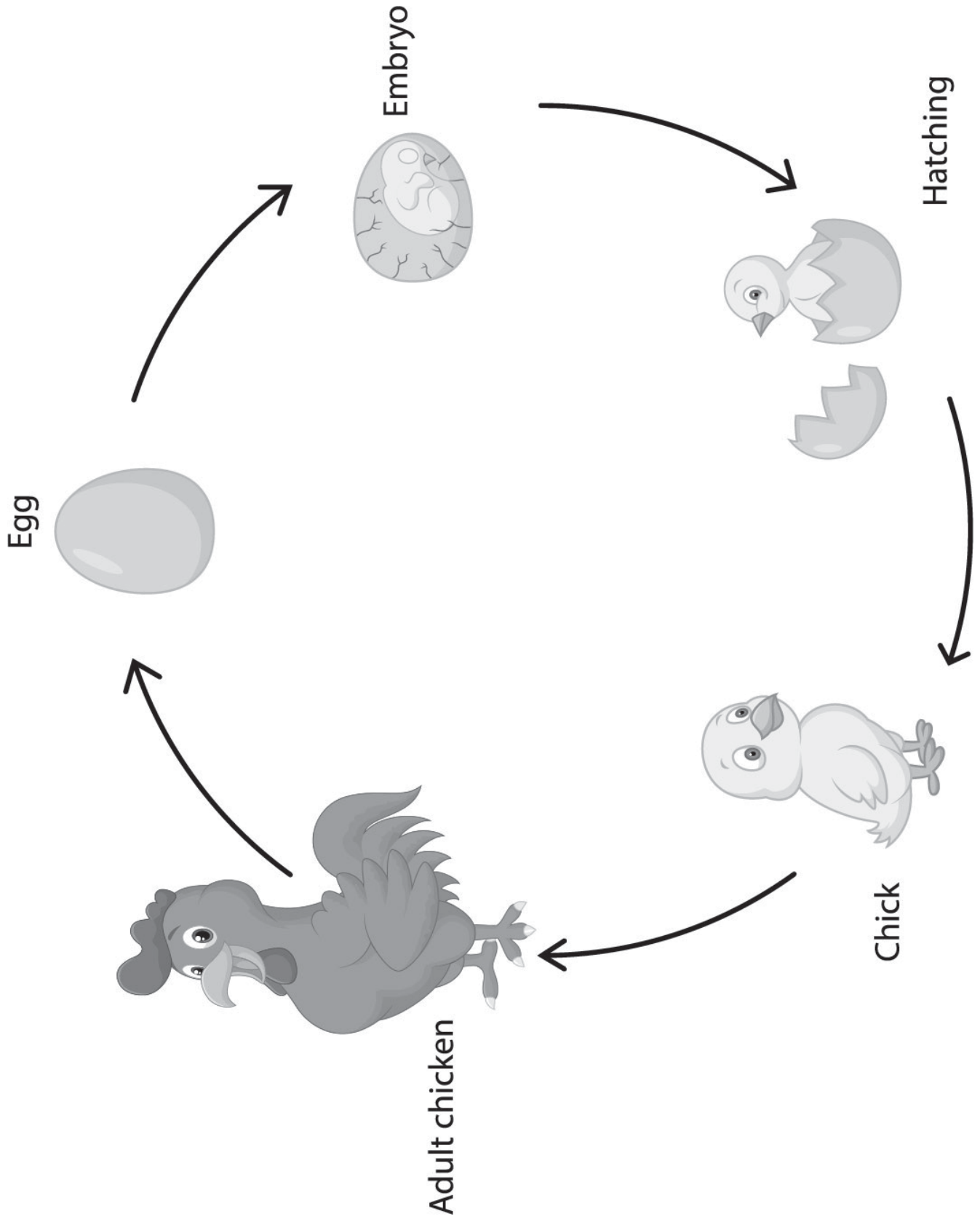
A FOOD WEB WITH MANY FOOD CHAINS



LIFE CYCLE OF AN APPLE TREE



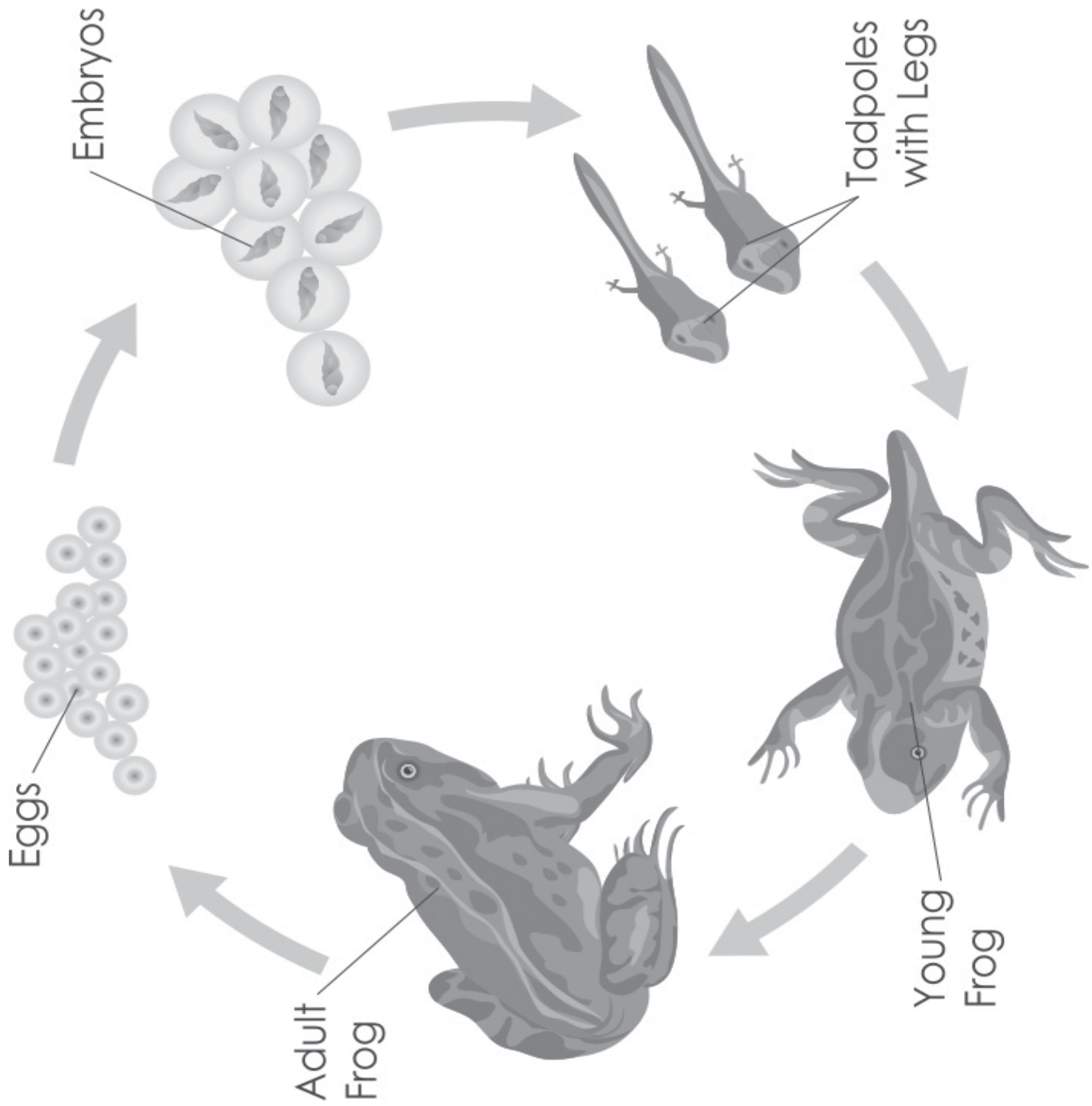
LIFE CYCLE OF A CHICKEN



RESOURCE 38

Shutterstock

LIFE CYCLE OF A FROG



RESOURCE 39

Shutterstock

A PYTHON HATCHING FROM AN EGG

